

BOARD OF EDUCATION
SD NO. 40 (NEW WESTMINSTER)
EDUCATION POLICY AND PLANNING COMMITTEE
AGENDA

Tuesday, January 14, 2025

4:30 pm

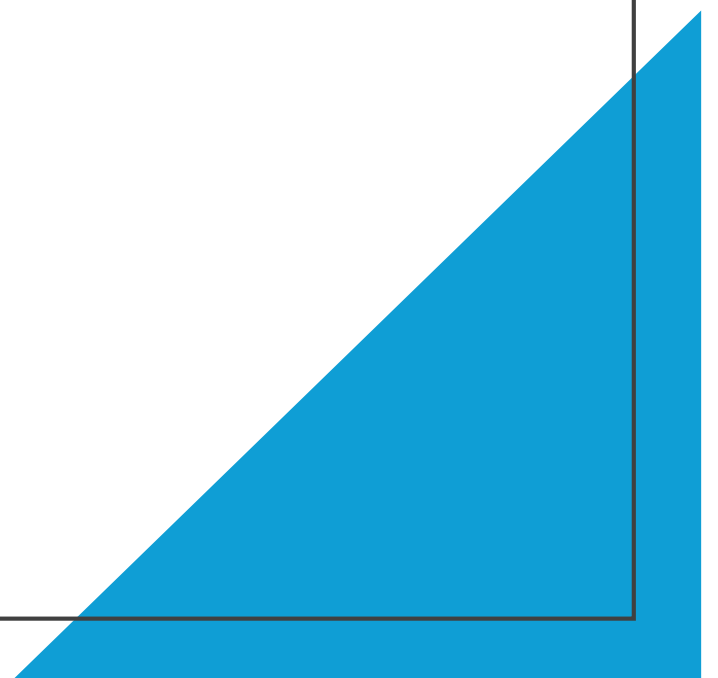
School Board Office (In-Person)

811 Ontario Street, New Westminster

The New Westminster School District recognizes and acknowledges the Qayqayt First Nation, as well as all Coast Salish peoples on whose traditional and unceded territories we live, we learn, we play and we do our work.

		Pages
1.	<u>Approval of Agenda</u>	4:30 PM
	<p>Recommendation: THAT the agenda for the [date] Education Policy and Planning Committee meeting be adopted as distributed.</p>	
2.	<u>Presentations</u>	
3.	<u>Comment and Question Period</u>	4:35 PM
4.	<u>Student Voice - Ava Purewal & Ruqaiyah Clouden</u>	4:40 PM
5.	<u>Reports from Senior Management</u>	
a.	Career Programs Report (Tammy McArthur - District Career Coordinator, Carrie Gurba - Educator - Career Programs)	4:55 PM 2
b.	Inclusive Education Update (Rhonda Jones - Director of Instruction - Inclusive Education)	5:10 PM 10
c.	District Calendar Review (Geraldine Lawlor - Associate Superintendent)	5:25 PM 15
6.	<u>General Announcements</u>	5:40 PM
7.	<u>Adjournment</u>	5:45 PM

SD 40 Dual
Credit
Programs



Dual Credit Youth Train in Trades Options

Applications for 2025-2026 are in the counselling office! Apply now to ensure a spot!



DUAL Credit = Graduation + Post Secondary Credits

NWSS On Campus TRAIN in TRADES Options for Grade 11 or 12s:

Carpentry Foundation (Partnership with BCIT) 16 seats Fulltime Semester 2

Professional Cook 1 (Partnership with VCC) 8 seats Fulltime Semester 2 + 4 weeks in summer @VCC

Plumbing Level 1 (Partnership with PIC) 16 seats in Fulltime Semester 1



Examples of Off Campus Programs (BCIT, KPU, PIC, VCC) During Grade 12 year:

Automotive Collision & Refinishing

Baker

Electrician

Security Systems Technician

Metal Fabrication

Millwright

Motorcycle Tech.

Automotive Service Technician

Horticulture

Welder

CNC Machinist

Aircraft Maintenance Engineer -Mechanical

Hair Design

Sheet Metal

Appliance Repair Technician

Heavy Mechanical Trades

HVAC

Refrigeration Technician

Cabinetmaking (Joinery)



For more information:

Tammy McArthur

SD40 Career Coordinator

tmcarthur@sd40.bc.ca

DUAL CREDIT Douglas College Healthcare Partnership

NWSS students take up to 6 university transferable courses Jan-Aug of their grade 12 year. Students earn PSI credit and graduation credits. Tuition is paid for by the school district! Please reach out to Mrs. McArthur ASAP for more info. Digital Applications will be made available in February 2025.

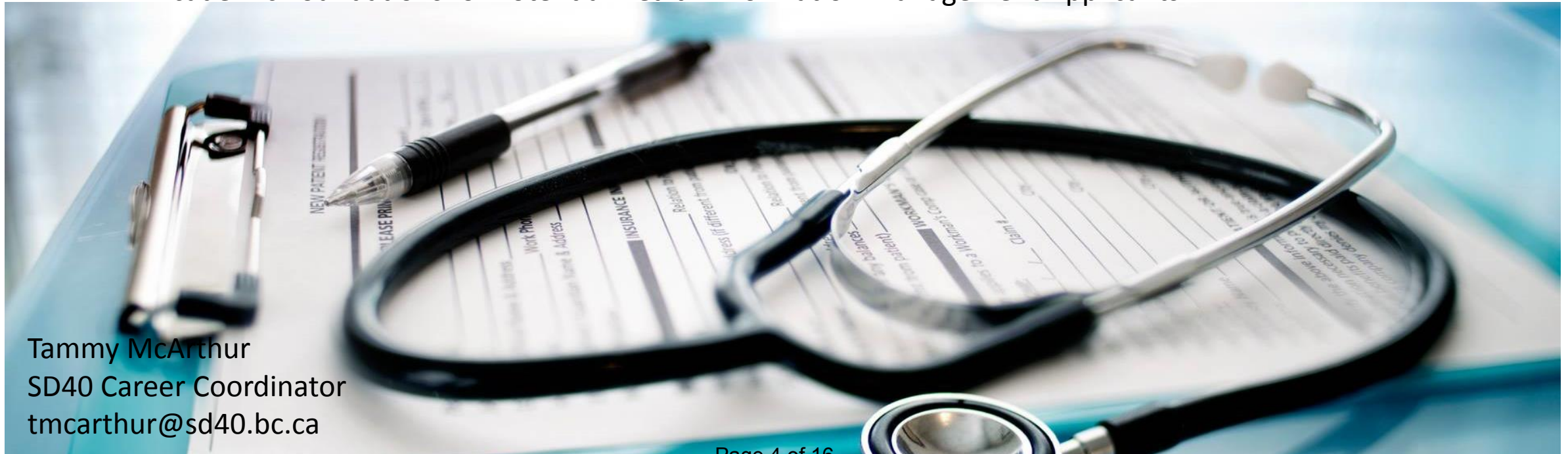
Pathways to Health Science at Douglas College:

Medical Office Assistant

Academic Foundations for Potential Nursing Applicants

Academic Foundations for Potential Psychiatric Nursing Applicants

Academic Foundations for Potential Health Information Management Applicants



Tammy McArthur
SD40 Career Coordinator
tmcarthur@sd40.bc.ca

DUAL CREDIT SFU SIAT CREATIVE TECHNOLOGY MICRO-CERTIFICATE

A suite of three dual-studies courses for high school students to explore digital creativity. Students can apply to all or any of the courses, though all three would need to be completed to receive the Creative Technology Micro-certificate. Open to Grade 12 students.

These courses are offered by the [School of Interactive Arts & Technology](#) (SIAT) at [Simon Fraser University](#) (SFU). Students have the potential to receive both high school and university credit which is applicable at SFU or transferrable to other local university programs. **Please reach out to Mrs. McArthur ASAP for more information and applications for next year: tmcarthur@sd40.bc.ca**



Course 1

PSIT 12A (4 credits)

SFU course — IAT 102: **Graphic Design** (3 SFU units)

Program length

September 3 to December 3 (2025)

Lectures will be in-person at SFU Surrey on Wednesdays from 4:30 - 7:30pm

48 students

Course 2

PSIT 12A (4 credits)

SFU course — IAT 165: **Game Design & Development** (3 SFU units)

Program length

January 6 to April 16 (2026)

Lectures will be in-person at SFU Surrey on Wednesdays from 4:30 - 7:30pm

24 students

Course 3

PSIT 12A (4 credits)

SFU course — IAT 199: **Creative Projects** (3 SFU units)

Program length

May 3 to June 29 (2026)

Lectures will be in-person at SFU Surrey on Tuesdays and Thursdays from 4:30 - 7:30pm

24 students

Showcasing Careers Programs: Work Experience 12A/B

WORK EXPERIENCE (WEX) IS DESIGNED TO PREPARE GRADE 11 AND 12 STUDENTS FOR THE TRANSITION FROM SECONDARY SCHOOL TO THE WORLD OF WORK OR FURTHER TRAINING AND EDUCATION.

- **PROVIDES ADMITTANCE TO OTHERWISE LESS ACCESSIBLE PROFESSIONAL ENVIRONMENTS FOR 85+HOURS**
- **FACILITATES CONSCIOUS CAREER REFLECTION SKILLS THAT CAN BE USED LIFELONG**
- **HELPS STUDENTS LEARN HOW TO TAKE INITIATIVE IN THE WORKPLACE, DEVELOP THEIR NETWORK, AND OVERALL STRENGTHENS EMPLOYABILITY SKILLS**
- **ENCOURAGES DEVELOPMENT OF GRIT AND RESILIENCE**
- **CONFIRMS OR CHANGES A STUDENT'S POST-SECONDARY/CAREER GOALS**



Work Experience 2024-2025 Ministry Enhancement Grant

- FOCUS ON PLACEMENTS IN ECE, TECHNOLOGY, AND HEALTHCARE
- CONTINUE TO BUILD COMMUNITY PARTNERSHIPS SUCH AS WITH THE CITY OF NEW WESTMINSTER, ROYAL COLUMBIAN HOSPITAL, NRPD
- INITIATION OF NEW DATABASE
- ALIGNING PROGRAM WITH REVISED MINISTRY WORK EXPERIENCE GUIDE E.G. REMOTE WORK
- DEVELOP OPPORTUNITIES WITH EDUCATION ASSISTANT SUPPORT FOR NEURODIVERSE LEARNERS

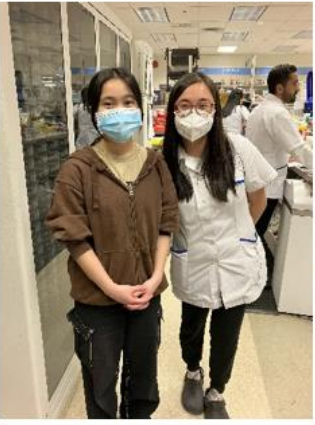


Snippets of Success

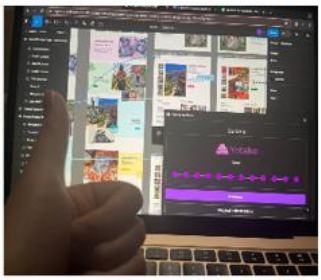
Dentist



Pharmacy



ECE



Political Science



Healthcare



**Tech/
Web
Design**



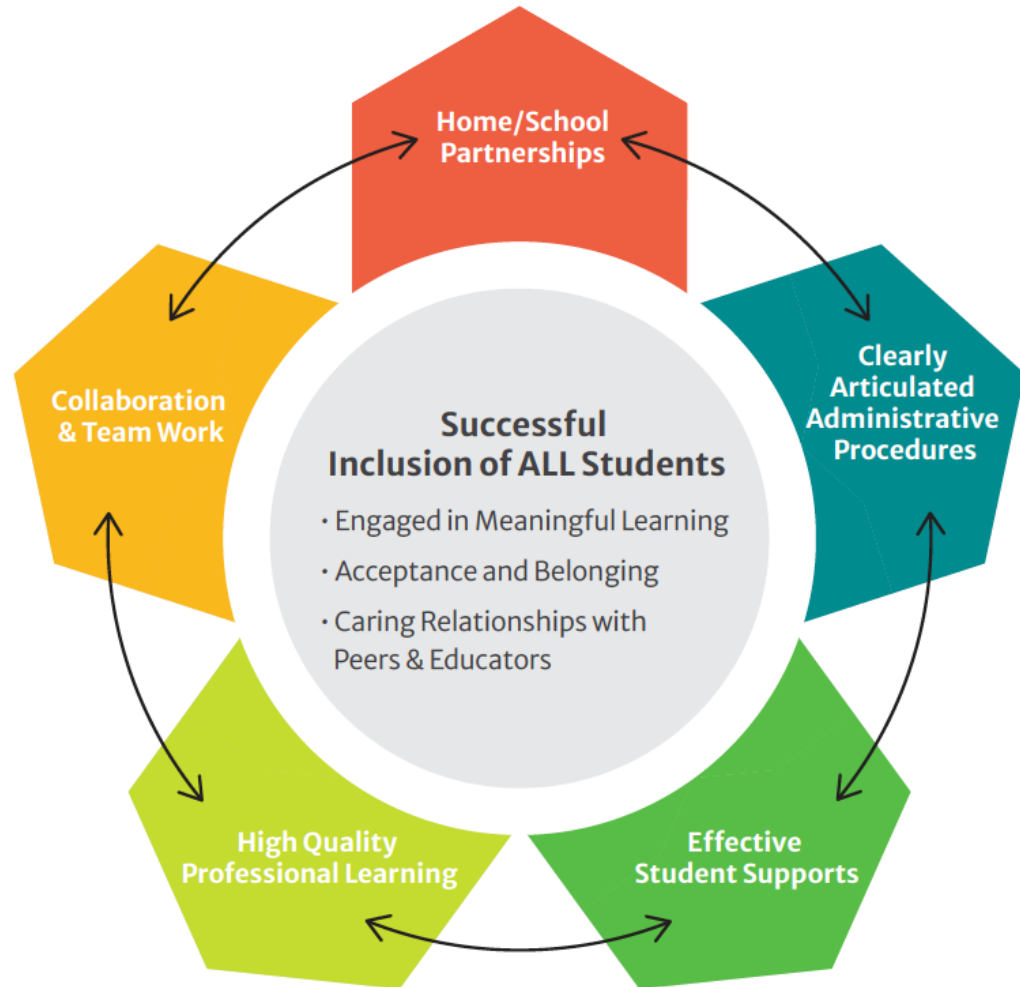
Business

Inclusive Education



New
Westminster
Schools

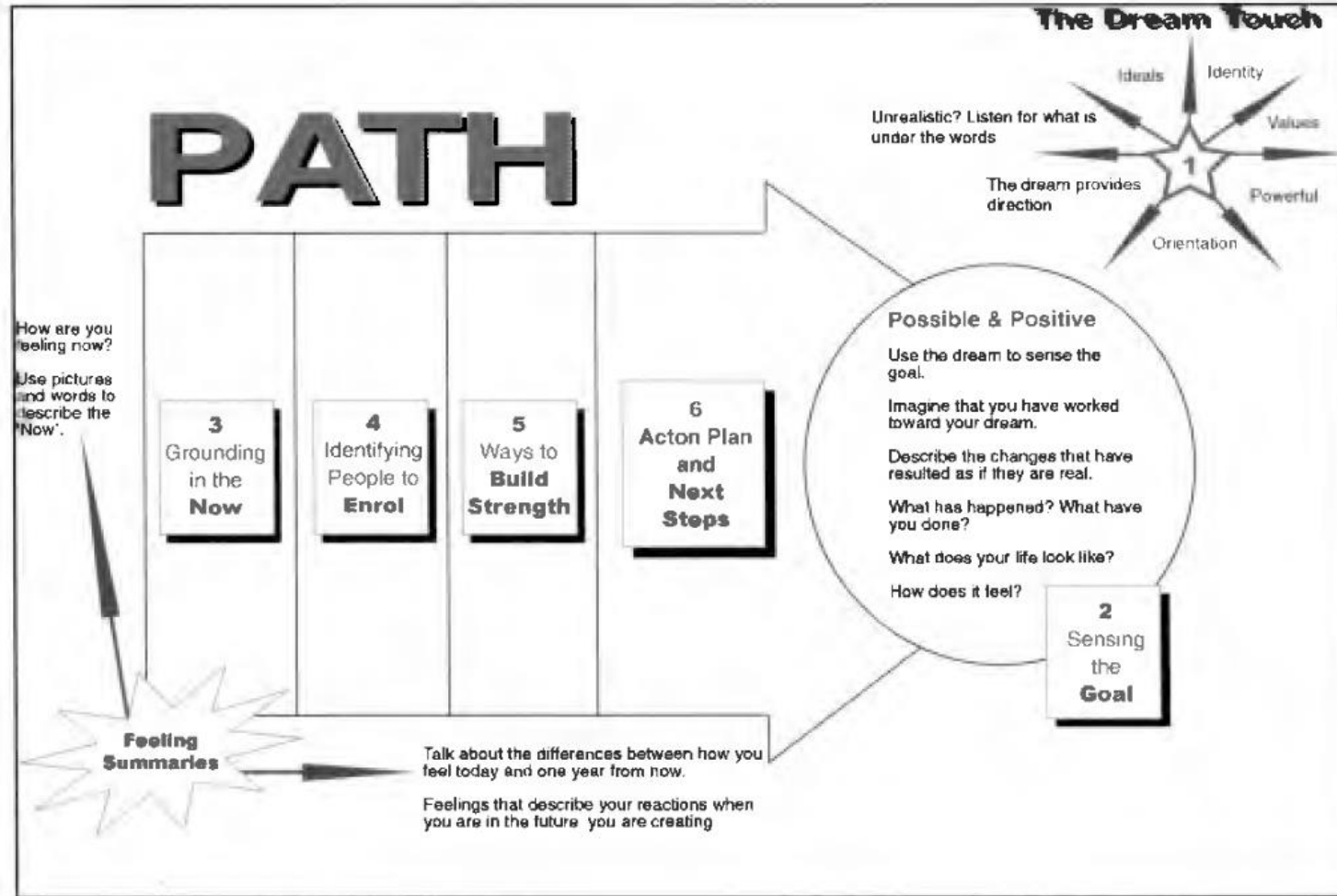
Inclusive Education Review



Areas of focus for the remainder of the 2024-2025 school year:

- **Universal Design for Learning**
- **Transitions**
- **Competency-Based IEP Implementation**

Where are we now?





Highlights

- Inclusive Insights Newsletter
- POPFASD CARS grant - \$4000 to support literacy
- New processes and procedures to support staff, students and families:
 - Revised SBT Template
 - Timeline for IEPs
 - Consultation Documentation to ensure parents are part of the process
 - Student File Review System
 - Targeted EA Training to Build Skills & Capacity

What's next?

Inclusive Education Staff Wrapping Around Schools in
Multidisciplinary Team Approach

Extensive Involvement with the Provincial Outreach
Programs

Inclusive Education Staff Handbook Update

Inclusive Education Website Alignment

Collaboration with Surrounding Districts to Support the
Professional Growth of Inclusive Education Team

May - Student Art Show – Anvil Centre



2025-2026 School Calendar - DRAFT

August 2025 1

S	M	T	W	Th	F	Sa
					1	2
3	4	5	6	7	8	9
10	11	12	13	14	15	16
17	18	19	20	21	22	23
24	25	26	27	28	29	30
31						

September 2025 2

S	M	T	W	Th	F	Sa
	1	2	3	4	5	6
7	8	9	10	11	12	13
14	15	16	17	18	19	20
21	22	23	24	25	26	27
28	29	30				

October 2025 3

S	M	T	W	Th	F	Sa
			1	2	3	4
5	6	7	8	9	10	11
12	13	14	15	16	17	18
19	20	21	22	23	24	25
26	27	28	29	30	31	

November 2025 4

S	M	T	W	Th	F	Sa
						1
2	3	4	5	6	7	8
9	10	11	12	13	14	15
16	17	18	19	20	21	22
23	24	25	26	27	28	29
30						

December 2025 5

S	M	T	W	Th	F	Sa
	1	2	3	4	5	6
7	8	9	10	11	12	13
14	15	16	17	18	19	20
21	22	23	24	25	26	27
28	29	30	31			

January 2026 6

S	M	T	W	Th	F	Sa
				1	2	3
4	5	6	7	8	9	10
11	12	13	14	15	16	17
18	19	20	21	22	23	24
25	26	27	28	29	30	31

February 2026 7

S	M	T	W	Th	F	Sa
1	2	3	4	5	6	7
8	9	10	11	12	13	14
15	16	17	18	19	20	21
22	23	24	25	26	27	28

March 2026 8

S	M	T	W	Th	F	Sa
1	2	3	4	5	6	7
8	9	10	11	12	13	14
15	16	17	18	19	20	21
22	23	24	25	26	27	28
29	30	31				

April 2026 9

S	M	T	W	Th	F	Sa
			1	2	3	4
5	6	7	8	9	10	11
12	13	14	15	16	17	18
19	20	21	22	23	24	25
26	27	28	29	30		

May 2026 10

S	M	T	W	Th	F	Sa
					1	2
3	4	5	6	7	8	9
10	11	12	13	14	15	16
17	18	19	20	21	22	23
24	25	26	27	28	29	30

June 2026 11

S	M	T	W	Th	F	Sa
	1	2	3	4	5	6
7	8	9	10	11	12	13
14	15	16	17	18	19	20
21	22	23	24	25	26	27
28	29	30				

July 2026 12

S	M	T	W	Th	F	Sa
			1	2	3	4
5	6	7	8	9	10	11
12	13	14	15	16	17	18
19	20	21	22	23	24	25
26	27	28	29	30	31	

2025-2026 School Calendar KEY

■	Statutory Holiday
■	Opening Partial Day
■	Non-Instructional Day (NI Day) – Staff
■	Administrative Day
■	School Vacation
■	Days of Instruction
■	Summer Vacation
2025	
September-01	Labour Day
September-02	Opening Partial Day
September-19	Pro D Day (Flexible)
September-30	National Day of Truth & Reconciliation
October-13	Thanksgiving Day
October-24	NI Day (Provincial Pro-D)
November-11	Remembrance Day Stat
December 22, 2025 - January 2, 2026	Winter Break
2026	
January-05	Schools reopen
January-14	NI Day (Professional Development)
February-13	District Wide Pro D Day
February-16	Family Day
March 16 - 27	Spring Break
April-03	Good Friday
April-06	Easter Monday
April-20	District Wide Pro D Day
May-18	Victoria Day
June-25	Last day - students
June 26	Administrative Day

2026-2027 School Calendar – DRAFT

August 2026							1
S	M	T	W	Th	F	Sa	
							1
2	3	4	5	6	7	8	
9	10	11	12	13	14	15	
16	17	18	19	20	21	22	
23	24	25	26	27	28	29	
30	31						

September 2026							2
S	M	T	W	Th	F	Sa	
		1	2	3	4	5	
6	7	8	9	10	11	12	
13	14	15	16	17	18	19	
20	21	22	23	24	25	26	
27	28	29	30				

October 2026							3
S	M	T	W	Th	F	Sa	
				1	2	3	
4	5	6	7	8	9	10	
11	12	13	14	15	16	17	
18	19	20	21	22	23	24	
25	26	27	28	29	30	31	

November 2026							4
S	M	T	W	Th	F	Sa	
1	2	3	4	5	6	7	
8	9	10	11	12	13	14	
15	16	17	18	19	20	21	
22	23	24	25	26	27	28	
29	30						

December 2026							5
S	M	T	W	Th	F	Sa	
		1	2	3	4	5	
6	7	8	9	10	11	12	
13	14	15	16	17	18	19	
20	21	22	23	24	25	26	
27	28	29	30	31			

January 2027							6
S	M	T	W	Th	F	Sa	
					1	2	
3	4	5	6	7	8	9	
10	11	12	13	14	15	16	
17	18	19	20	21	22	23	
24	25	26	27	28	29	30	
31							

February 2027							7
S	M	T	W	Th	F	Sa	
	1	2	3	4	5	6	
7	8	9	10	11	12	13	
14	15	16	17	18	19	20	
21	22	23	24	25	26	27	
28							

March 2027							8
S	M	T	W	Th	F	Sa	
	1	2	3	4	5	6	
7	8	9	10	11	12	13	
14	15	16	17	18	19	20	
21	22	23	24	25	26	27	
28	29	30	31				

April 2027							9
S	M	T	W	Th	F	Sa	
				1	2	3	
4	5	6	7	8	9	10	
11	12	13	14	15	16	17	
18	19	20	21	22	23	24	
25	26	27	28	29	30		

May 2027							10
S	M	T	W	Th	F	Sa	
						1	
2	3	4	5	6	7	8	
9	10	11	12	13	14	15	
16	17	18	19	20	21	22	
23	24	25	26	27	28	29	
30	31						

June 2027							11
S	M	T	W	Th	F	Sa	
		1	2	3	4	5	
6	7	8	9	10	11	12	
13	14	15	16	17	18	19	
20	21	22	23	24	25	26	
27	28	29	30				

July 2027							12
S	M	T	W	Th	F	Sa	
				1	2	3	
4	5	6	7	8	9	10	
11	12	13	14	15	16	17	
18	19	20	21	22	23	24	
25	26	27	28	29	30	31	

2026-2027 School Calendar KEY

	Statutory Holiday
	Opening Partial Day
	Non-Instructional Day (NI Day) – Staff
	Administrative Day
	School Vacation
	Days of Instruction
	Summer Vacation
2026	
September-07	Labour Day
September-08	Opening Partial Day
September-29	TBD
September-30	National Day of Truth & Reconciliation
October-12	Thanksgiving Day
October-23	NI Day (Provincial Pro-D)
November-11	Remembrance Day Stat
November-27	NI Day (Provincial Pro-D)
December 21, 2026- January 1, 2027	Winter Break
2027	
January-04	Schools reopen
February-12	NI Day (Provincial Pro-D)
February-15	Family Day
March 22 -April 2	Spring Break
April-02	Good Friday
April-05	Easter Monday
April-26	NI Day (Provincial Pro-D)
May-21	NI Day (Provincial Pro-D)
May-24	Victoria Day
June-29	Last day - students
June-30	Administrative Day