

Skwo:wech Stream



November 28, 2025

Important Dates:

Winter Food Drive – Monday, Dec 1 to Friday, Dec 5

- Food donations provided to Purpose Society for hampers

Holiday Bake Sale – Friday, Dec 12

- 8:15am-8:45am courtyard; \$2.00 per item cash only
- We need lots of baked goods! Sign up to bring nut-free treats:
<http://www.tinyurl.com/skwowechholidaybakesale25>
- All proceeds help the PAC support art/music, sports, & educational workshops at school

Report Cards – Friday, Dec 12

- *Printed reports will be sent home* with students
- Also available online in MyEdBC

PAC McDonald's Fun Lunch – Friday, Dec 19

- Ordering is now open on Munchalunch
- Order deadline is Wednesday, December 10
- Sign up to volunteer on www.munchalunch.com or email
skwowechevolunteer@gmail.com

Updates

Rainy Days

- Please be sure your children arrive at school dressed for the rainy weather and provide extra clothing for the younger ones to keep in the classroom. Thank you!

Kind Mind Navigating Big Emotions Workshop - Wednesday, Dec 3

- 6:00 – 7:00 pm in the library and virtual [Kind Mind workshop](#)
- As part of our participation in the *Kind Mind* program this year, we're hosting a 1-hour interactive session for parents and caregivers
- The workshop will explore how anxiety and big emotions impact the brain, body, and behaviours. Babysitting is available for children (kindergarten age or older)
- Spots are limited; email skwowecheapac@gmail.com to request a spot

Holiday Confi-Dance - Wednesday, Dec 10

- 5:30-7:30 pm in the gym
- To celebrate the end of our month with Kind Mind, the PAC is excited to support a free dance for all Skwo:wech families ... featuring *DJ Rock n' Beau*
- There will be a paid concession available with snacks and drinks (cash/credit)

Hacking for the Holidays

- Help making play accessible for kids with disabilities fundraiser – video in link below
- <https://hackingfortheholidays2025.causevox.com>

Winter Clothing Swap - Nov 14 – Dec 12

- Pick up some new (to you) items to stay warm this winter!
- No donation is required to participate
- Drop off any coats, rain boots, snow boots, and any other cold weather gear (washed and in good condition) for others, if you can

Updated Procedure 330 – Student Extended Leaves of Absence (*Exceeding One Week*)

- Families planning to be away during the school year for an extended period exceeding one week, between October 1 and June 30, must complete and submit an [Extended Leave of Absence Form AP330-B](#) to the school principal prior to the start of the absences.
- For absences of more than one week and less than four weeks (20 instructional days), a place in the student's current school will be held.
- For absences of more than four weeks (more than 20 instructional days), the student may be withdrawn from the school register and would have to re-register through Central Registration upon return. Every effort would be made to place the student in their catchment school; however, placement will be dependent on available space. If there is no space at the catchment school, the student would be placed at the next closest school with space.

FuelUp! School Lunch Program

- [December menu is now available](#)
- Orders must be submitted by 10 am at least two (2) business days in advance
<https://newwestschools.ca/programs-services/fuel-up/overview/>

KIND MIND MONTH PRESENTS

NAVIGATING BIG EMOTIONS

A Workshop for Skwo:wech
Parents & Caregivers

Join us for a 1-hour interactive session
exploring how anxiety and big emotions
impact the brain, body, and behaviors.

WED, DECEMBER 3
6:00 PM – 7:00 PM

In the school library (Virtual Option
Available - Link to be provided)

We will break down how anxiety impacts
the brain and body, and introduce the
DBT ACCEPTS Model, a set of six
practical coping skills to help your family
navigate emotional challenges.

Interactive Session

Actionable Strategies

Live Q&A

FREE BABYSITTING AVAILABLE!
(For kindergarten age or older)

To request a babysitting spot,
please email:
skwowechpac@gmail.com



an initiative from
The Kelty Foundation

holiday confi -DANCE party

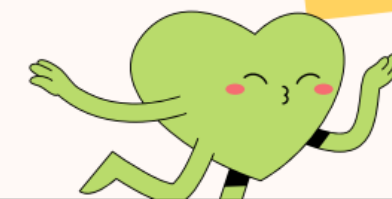
DECEMBER 10
5:30 - 7:30 PM

at the Skwo:wech gym

**FREE ADMISSION,
PAID CONCESSION**

FEATURING

DJ ROCK'N'BEAU



SKWO:WECH ELEMENTARY PAC

HOLIDAY BAKE SALE

**Friday, December 12
8:15 - 8:45 am
(or while quantities last)**

**\$2 EACH
CASH ONLY**

Limit 2 items per person
(Please line up again if you want more than 2 items)

Volunteers needed to bake and sell items!
Scan the QR code to sign up.



ALL PROCEEDS GO TO THE SKWO:WECH PARENT ADVISORY COUNCIL

McDonald's

FUN LUNCH

FRIDAY DECEMBER 19

ORDER BY DECEMBER 10

HAMBURGER	\$ 3.00	PLAIN CHIPS	\$ 1.50
CHEESEBURGER	\$ 3.50	WELCH'S FRUIT SNACKS	\$ 0.50
HOTCAKES (VEGETARIAN)	\$ 4.50	MCDONALDS MCPOP (BITE-SIZE DOUGHNUT)	\$ 1.50
6 PIECE MCNUGGETS (1 FREE SAUCE PER ORDER)	\$ 6.50		
CHOCOLATE MILK	\$ 2.00		
2% MILK	\$ 2.00		
MCDONALDS APPLE JUICE	\$ 1.75		
MCDONALDS FRUIT PUNCH	\$ 1.75		

SCAN TO ORDER AND VOLUNTEER



ORDER BY DECEMBER 10. SCAN THE QR CODE OR GO TO:
[HTTPS://MUNCHALUNCH.COM/SCHOOLS/SKWOWECH](https://munchalunch.com/schools/skwowech)



WINTER FOOD DRIVE

December 1 – 5

Drop off items in your classroom bin!



Monday:
Breakfast items

Tuesday:
Lunch items



Wednesday:
Canned dinners



Thursday:
Snacks & treats



Friday:
Toiletries

Remember: Every little bit helps! Let's make this a joyful season for all.

SRWO:WECH PAC PRESENTS

Winter Clothing Swap

NOV 14 TO DEC 12



Drop off your gently used
winter clothing (and
accessories!) in the box by
the front entrance.

Pick out a new-to-you
coat anytime through
Nov 14 to Dec 12!

NO DONATION REQUIRED TO PARTICIPATE

DISCOVER

New Westminster Schools

You're invited to attend our information evening showcasing what we have to offer at New Westminster Schools!

Visit our information booths in the Grand Commons and speak to district staff and community members about their programs!

We look forward to seeing there!

DATE: Tuesday, December 2, 2025

TIME: 5:30 p.m. to 8:15 p.m.

PLACE: New Westminster Secondary School
(820 Sixth Street)



Discover New Westminster Schools December 2, 2025 Event Schedule

TIME	EVENT AND LOCATION			
5:30pm – 7:30pm	Programs of Choice and Featured Curricular Area Booths Scholastic Book Fair Grand Commons			
6:00pm – 6:45pm	Programs of Choice: EFI and LFI French Immersion Presented by: Nathalie Tremblay, Anahita Konjin & Leslie Nichol Room: 3034 – 3036	Programs of Choice: Dual Credit Options Presented by: Tammy McArthur Room 3035 – 3037	Programs of Choice: Home Learners Program (HLP) Presented by: HLP Staff Room: 3033	Grade 9 Course Programming Session current Grade 8 students & families Presented by: Nancy Milne & Katherine Kosman Room: Theatre
6:45pm – 7:30pm	Programs of Choice: Montessori Presented by: Kimalyn Hikida & Leslie Nichol Room: 3034 – 3036	Student Support Services at NWSS for students with disabilities and diverse abilities Presented by: Miriam Schellenberg Room 3035 – 3037	Grade 10 Course Programming Session current Grade 9 students & families Presented by: Matthew Mitchell & Dave Mori Room: Theatre	
7:30pm – 8:15pm	Hosting a Visiting International Education Student: The International Education Homestay Program Presented by: Eva Shen Room: 3034 – 3036	Grade 12 Course Programming Session current Grade 11 students & families Presented by: Jennifer Towers & Bhupinder Mattoo Room: 3035 – 3037	Grade 11 Course Programming Session current Grade 10 students & families Presented by: Marika Melvin & Gary Pattern Room: Theatre	