

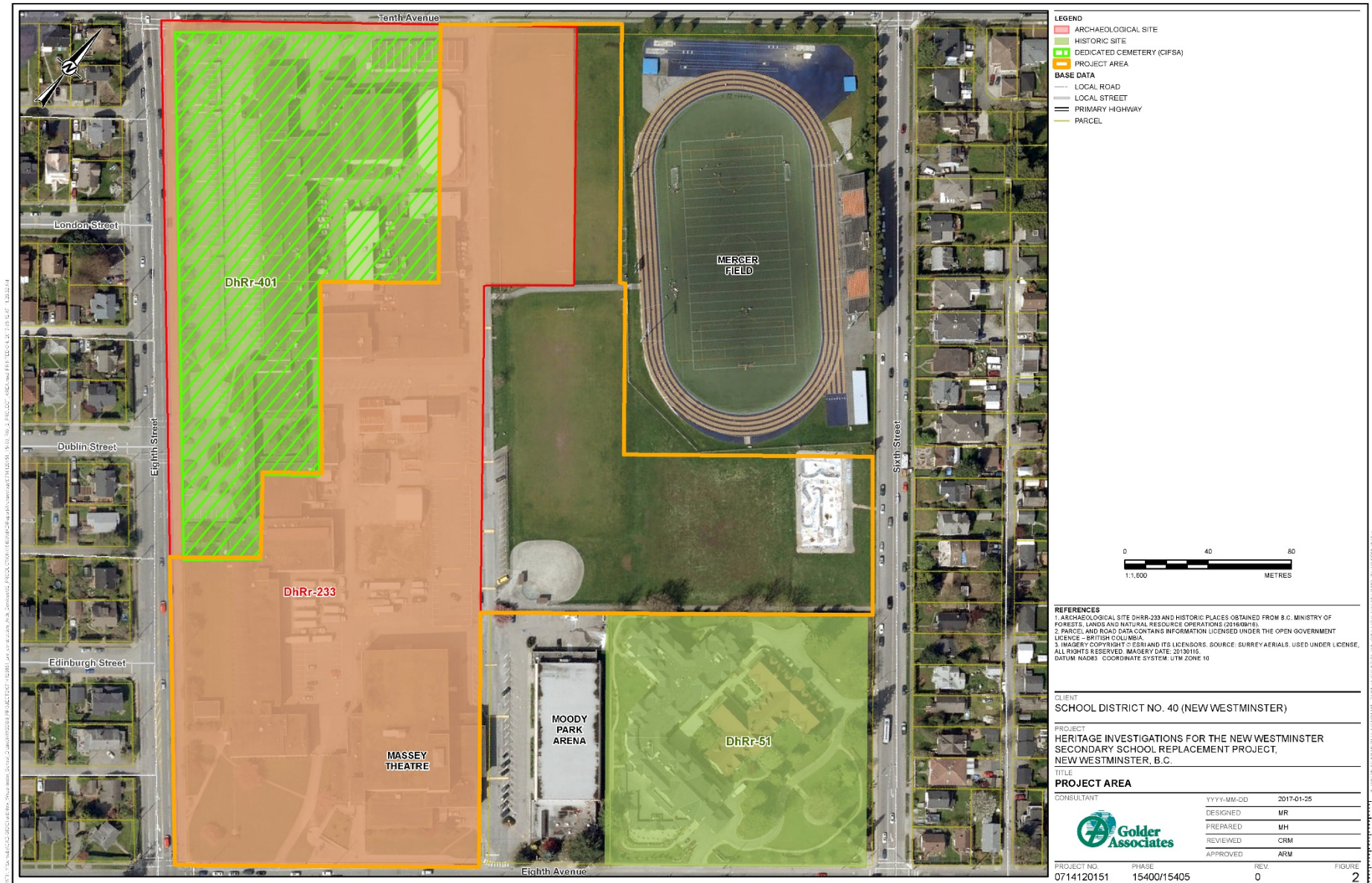


**GOLDER**

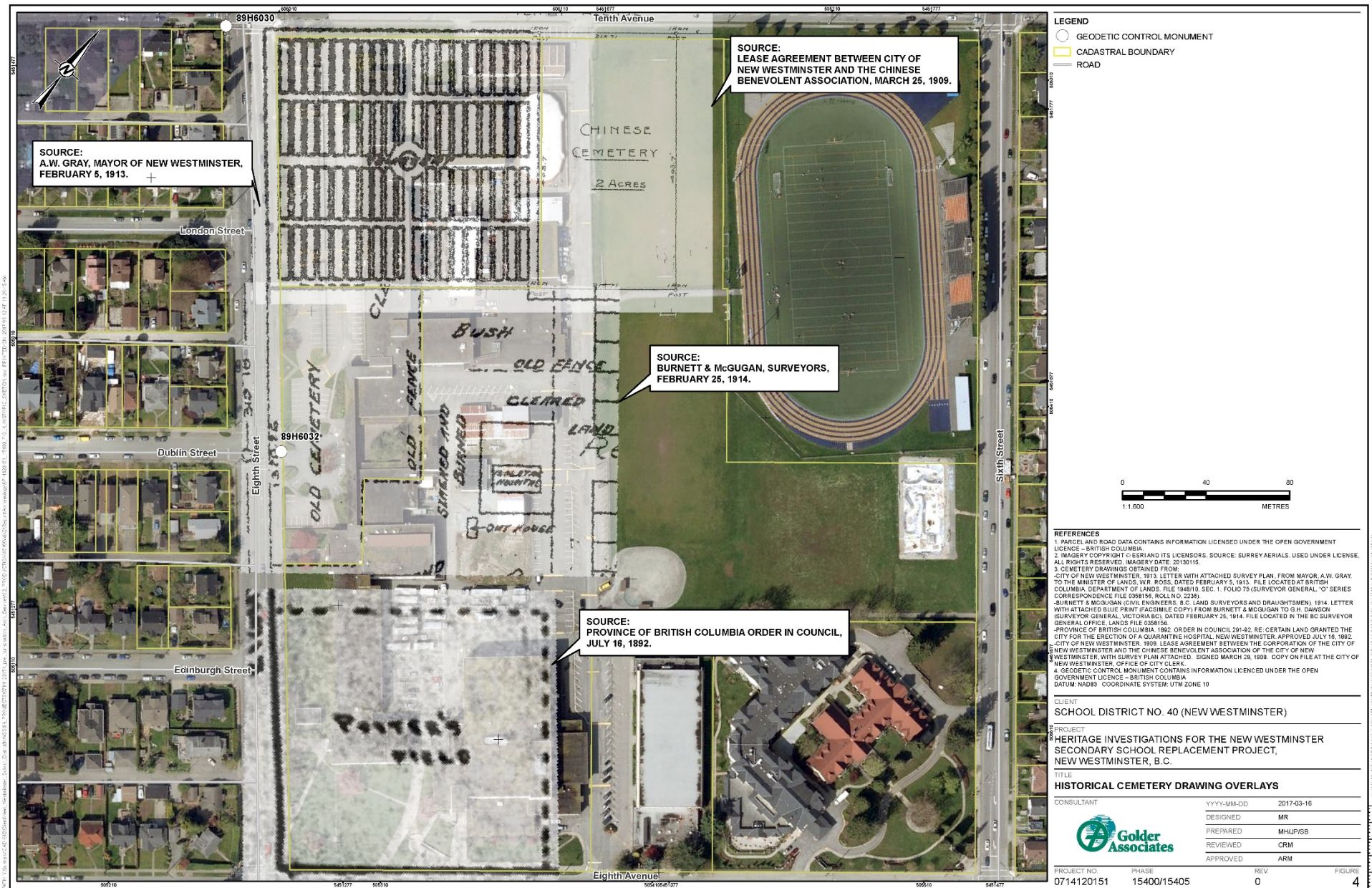
MEMBER OF WSP

# **Heritage Services in Support of School District 40 and the New Westminster Secondary School Replacement Project**

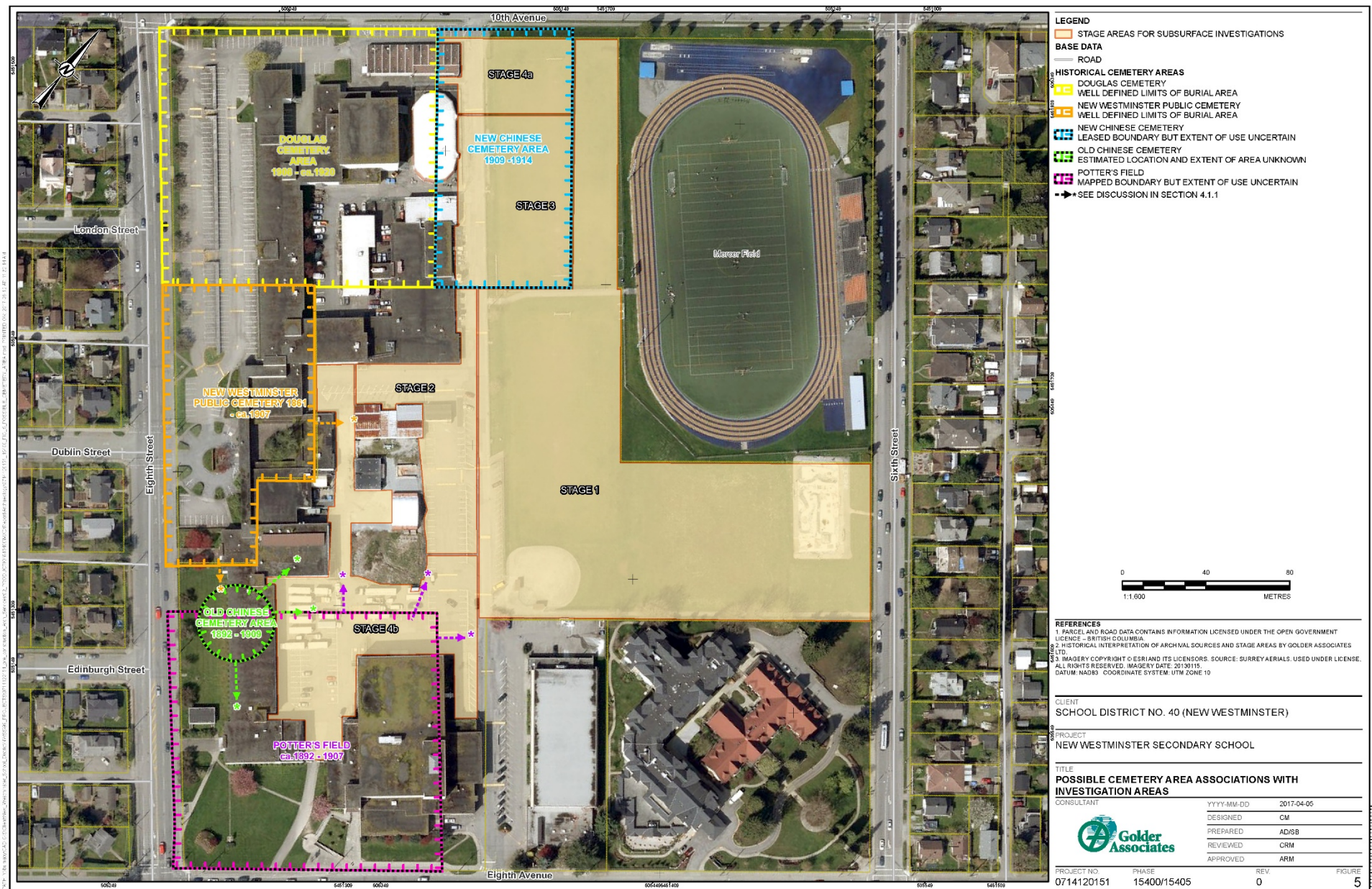
Charles Moore, Senior Archaeologist, Project Manager



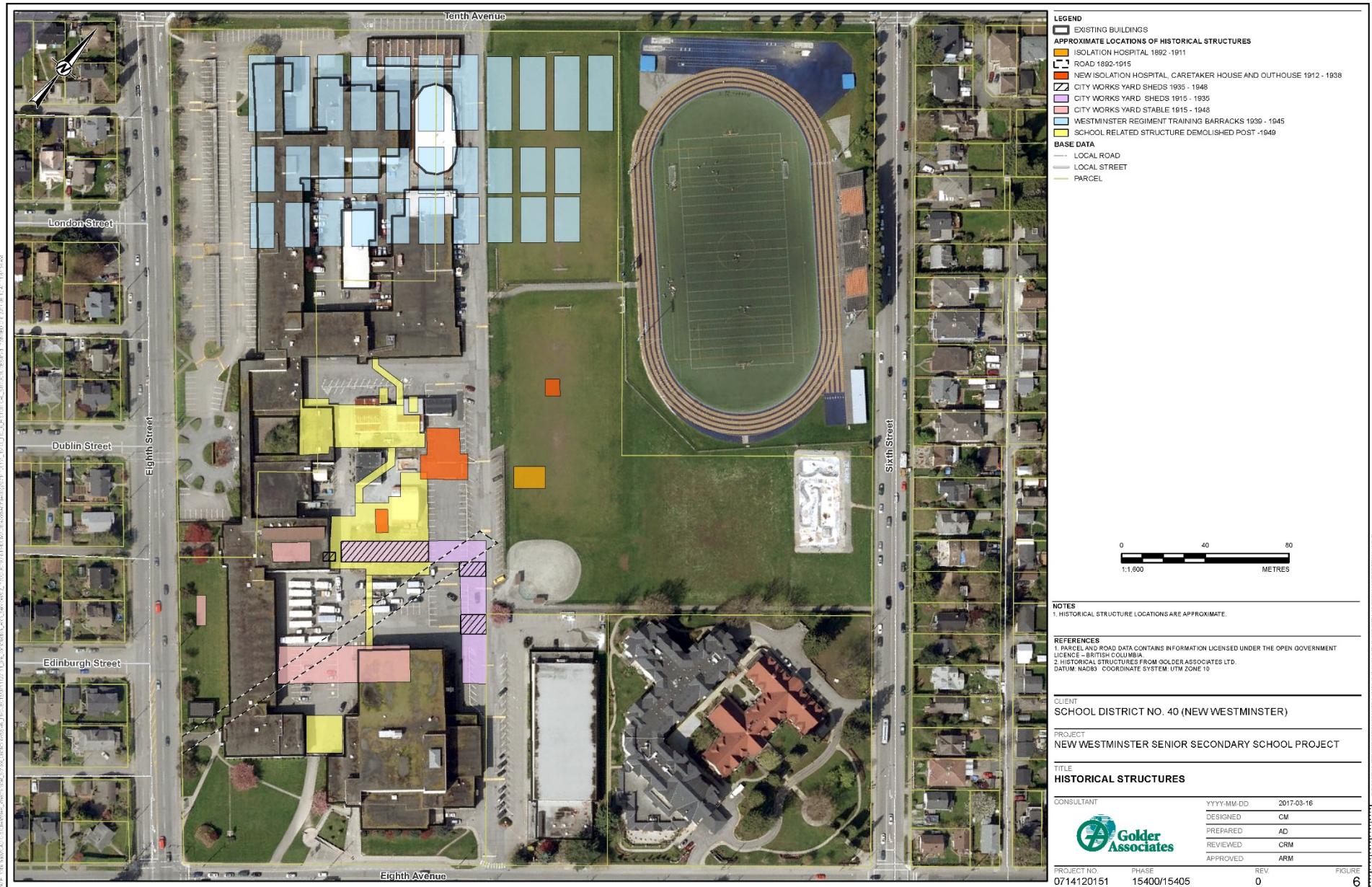




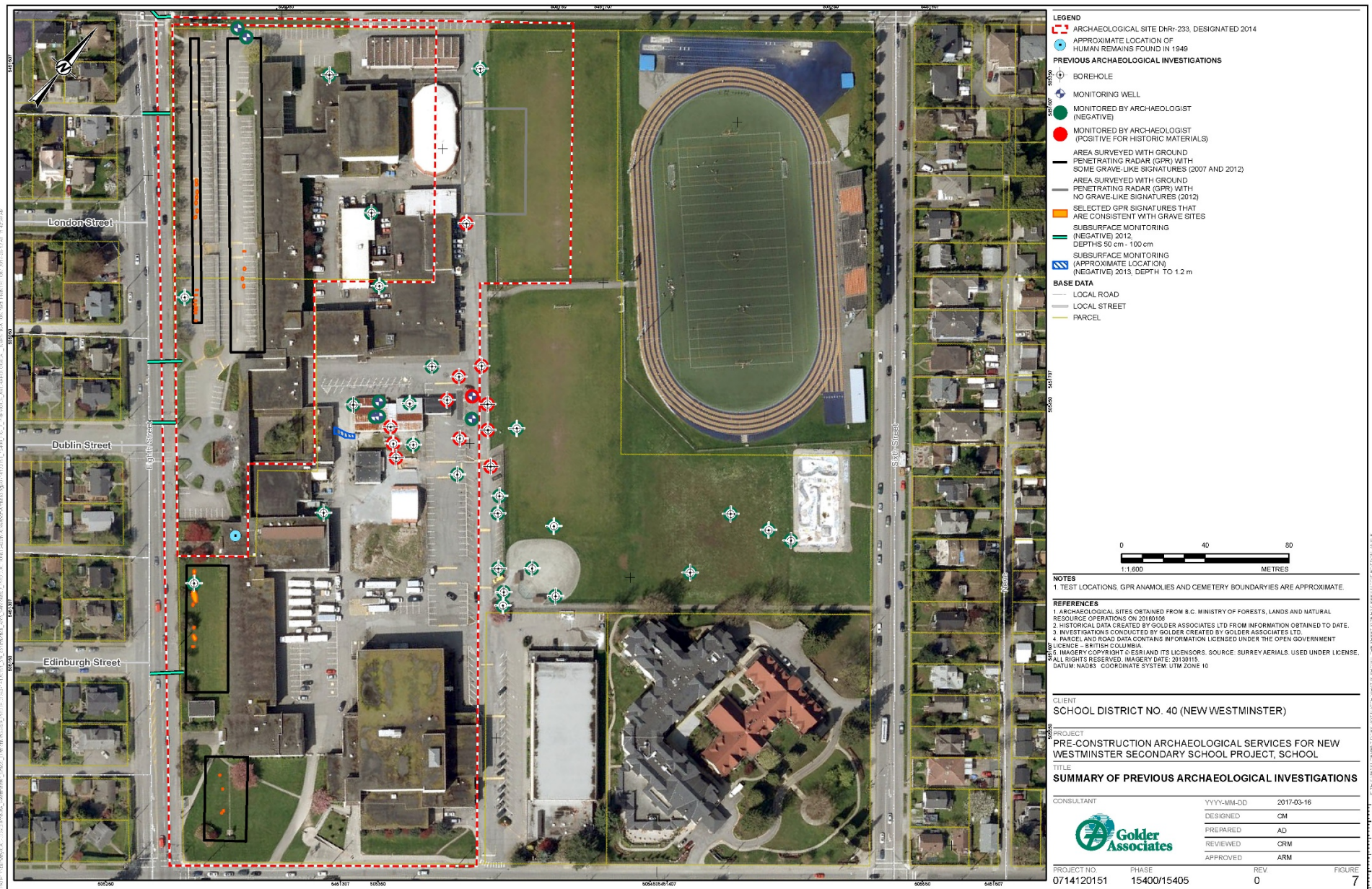




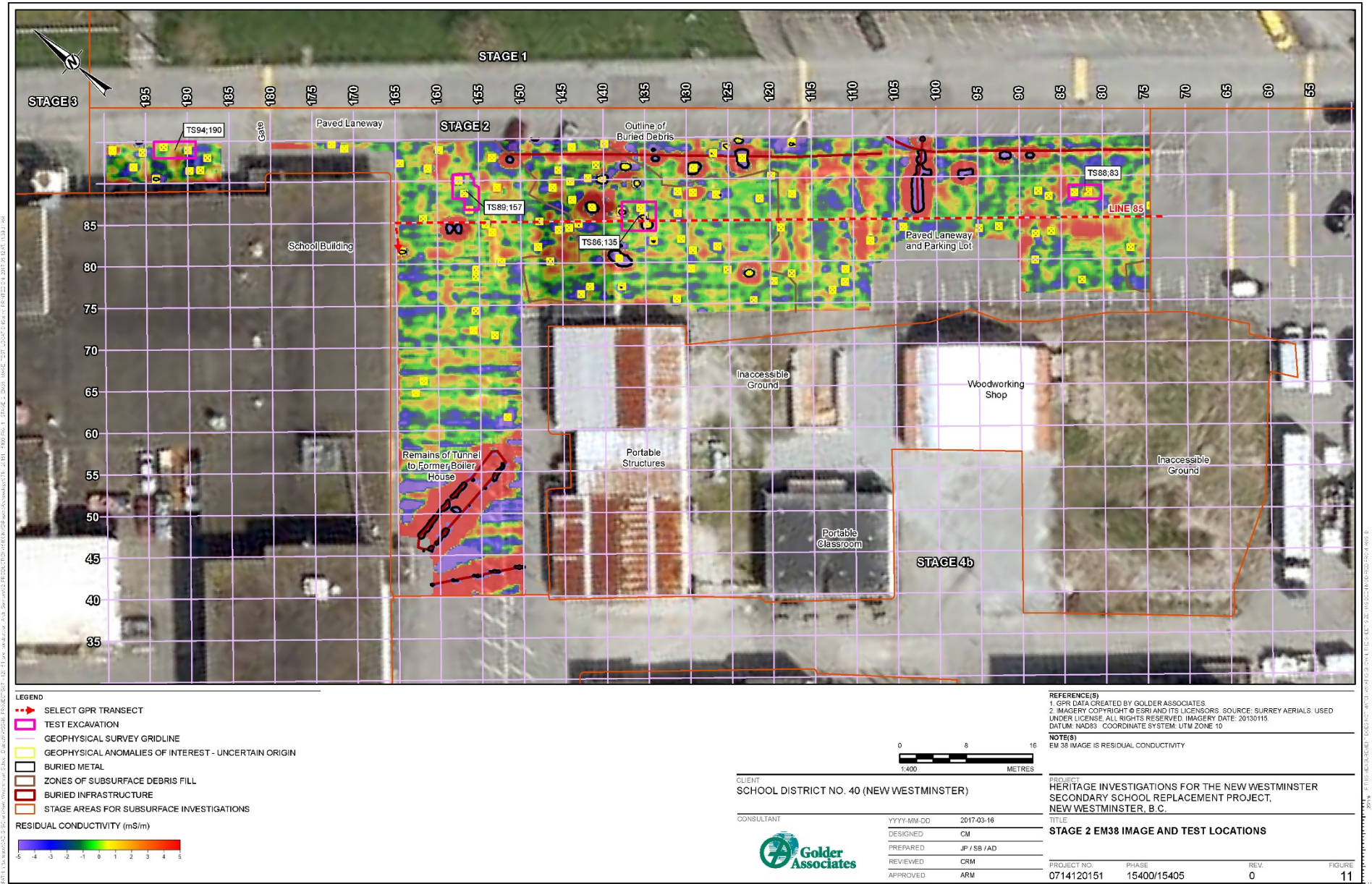




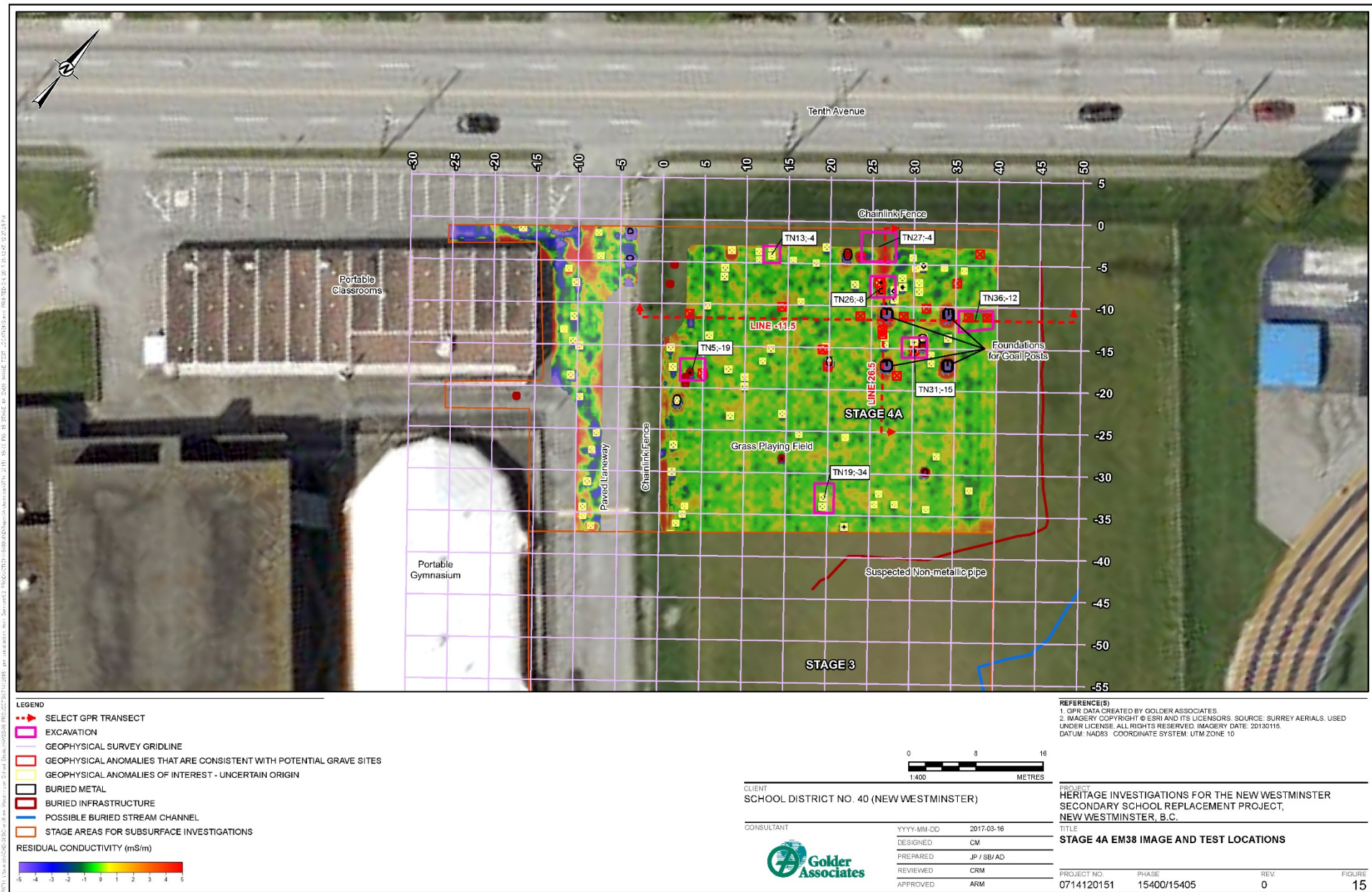




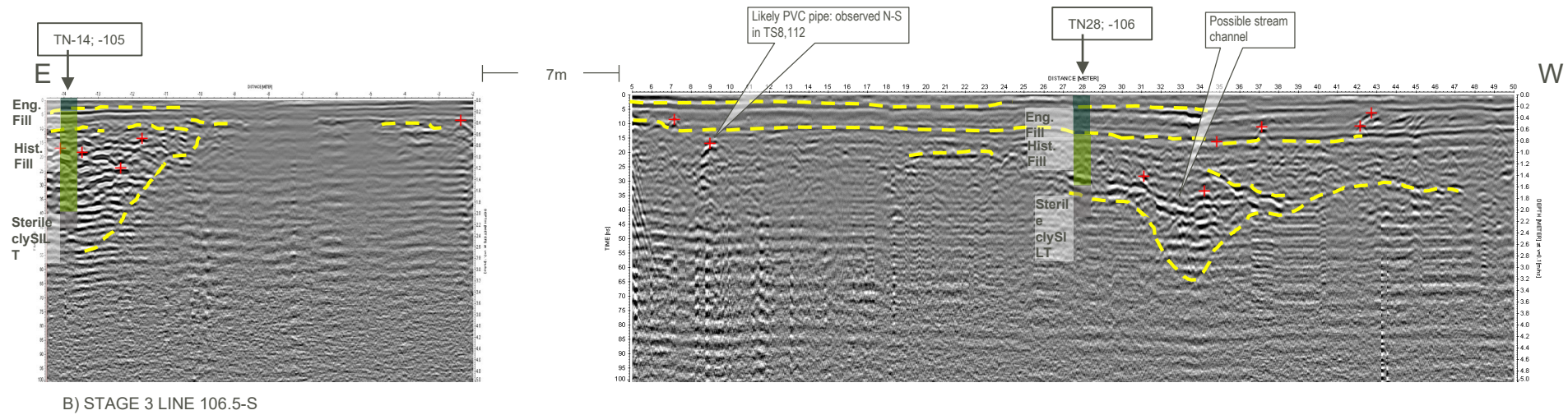
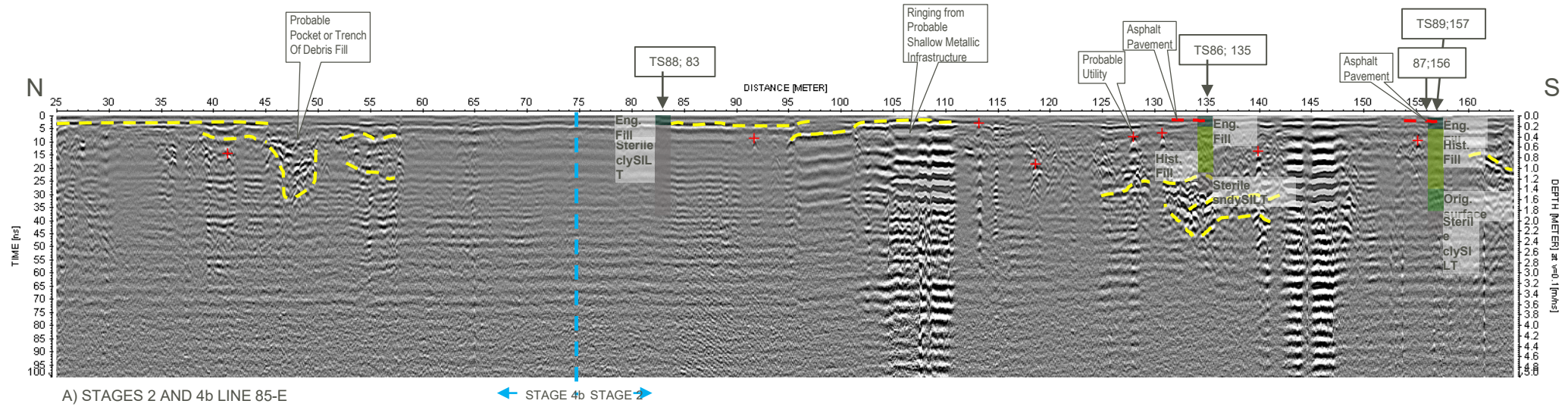






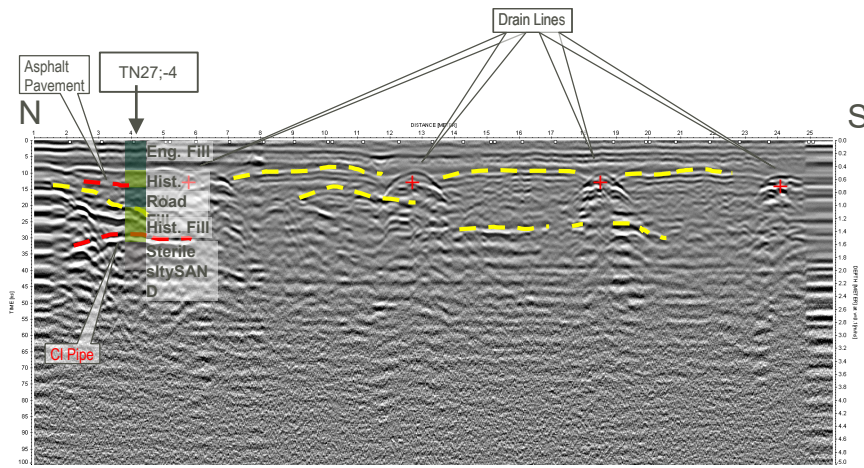




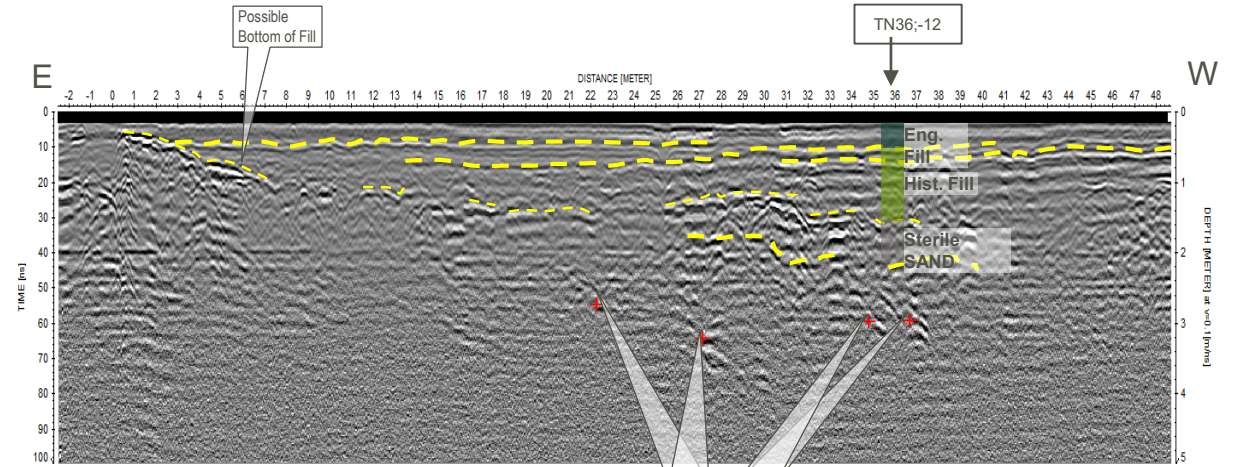


SCHOOL DISTRICT NO. 40 (NEW WESTMINSTER)

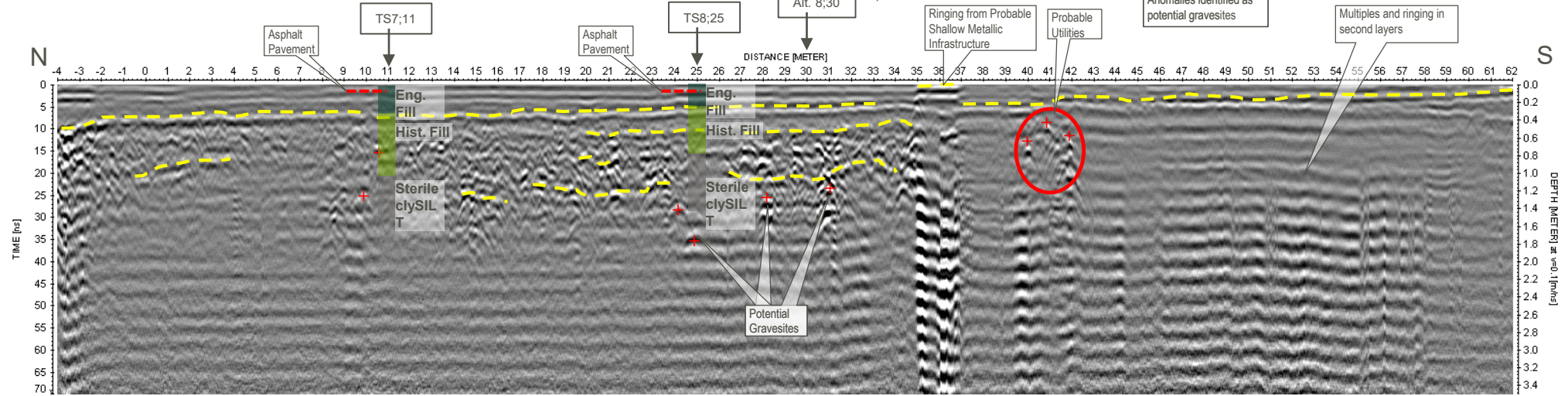




A) STAGE 4a LINE 26.5-E



B) STAGE 4a LINE 11.5-S



B) STAGE 4b LINE 8-E

SCHOOL DISTRICT NO. 40 (NEW WESTMINSTER)







Path: \\bham\cadd\6302\newwest\newwest\school\Drawings\SSW\PROJECT\2014\2015\preconstruction\Arch\_Survey\02\_PRODUCT\16300\CONSTRUCTION\16300\_PFS\_MONITORED\_TESTS.mxd PRINTED ON: 2018-04-17 AT 5:11:19 PM



**LEGEND**  
**ARCHAEOLOGICAL TEST PIT LOCATION**  
● POSITIVE RESULT (HISTORICAL MATERIAL)  
○ NEGATIVE RESULT  
● MONITORED TEST - POSITIVE RESULT (HISTORICAL MATERIAL)  
○ MONITORED TEST - NEGATIVE RESULT  
● UNMONITORED TEST  
**PREVIOUS INVESTIGATIONS**  
◆ MONITORED TEST - POSITIVE RESULT (HISTORICAL MATERIAL)  
◇ MONITORED TEST - NEGATIVE RESULT  
◇ UNMONITORED TEST  
— ROAD  
[Red Outline] INVESTIGATION AREA FOR SUBSURFACE INVESTIGATIONS  
[Dashed Red Outline] STUDY UNIT BOUNDARY

**REFERENCES**  
1. ARCHAEOLOGICAL SITE DHR-233 AND HISTORICAL PLACES OBTAINED FROM B.C. MINISTRY OF FORESTS, LANDS AND NATURAL RESOURCE OPERATIONS (2017/03/01)  
2. PARCEL AND ROAD DATA CONTAINS INFORMATION LICENSED UNDER THE OPEN GOVERNMENT LICENCE - BRITISH COLUMBIA  
3. IMAGERY COPYRIGHT © ESRI AND ITS LICENSORS. SOURCE: SURVEY AERIALS. USED UNDER LICENSE.  
4. ALL RIGHTS RESERVED. IMAGERY DATE: 2013/01/15  
DATUM: NAD83 COORDINATE SYSTEM: UTM ZONE 10

**CLIENT**  
SCHOOL DISTRICT NO. 40 (NEW WESTMINSTER)

**PROJECT**  
HERITAGE INVESTIGATIONS FOR THE NEW WESTMINSTER  
SECONDARY SCHOOL REPLACEMENT PROJECT,  
NEW WESTMINSTER, B.C.  
PERMIT REPORT HCA 2016-377

**TITLE**  
SUMMARY OF SUBSURFACE INVESTIGATIONS

CONSULTANT	YYYY-MM-DD	2018-04-17
	DESIGNED	CDM
	PREPARED	JP
	REVIEWED	CDM
	APPROVED	ARM

PROJECT NO.	PHASE	REV.	FIGURE
0714120151	16300/16304	0	4

CONSULTANT: GOLDER ASSOCIATES INC. 100-10100 163RD AVE. S.W. VANCOUVER, BC V6V 2E9

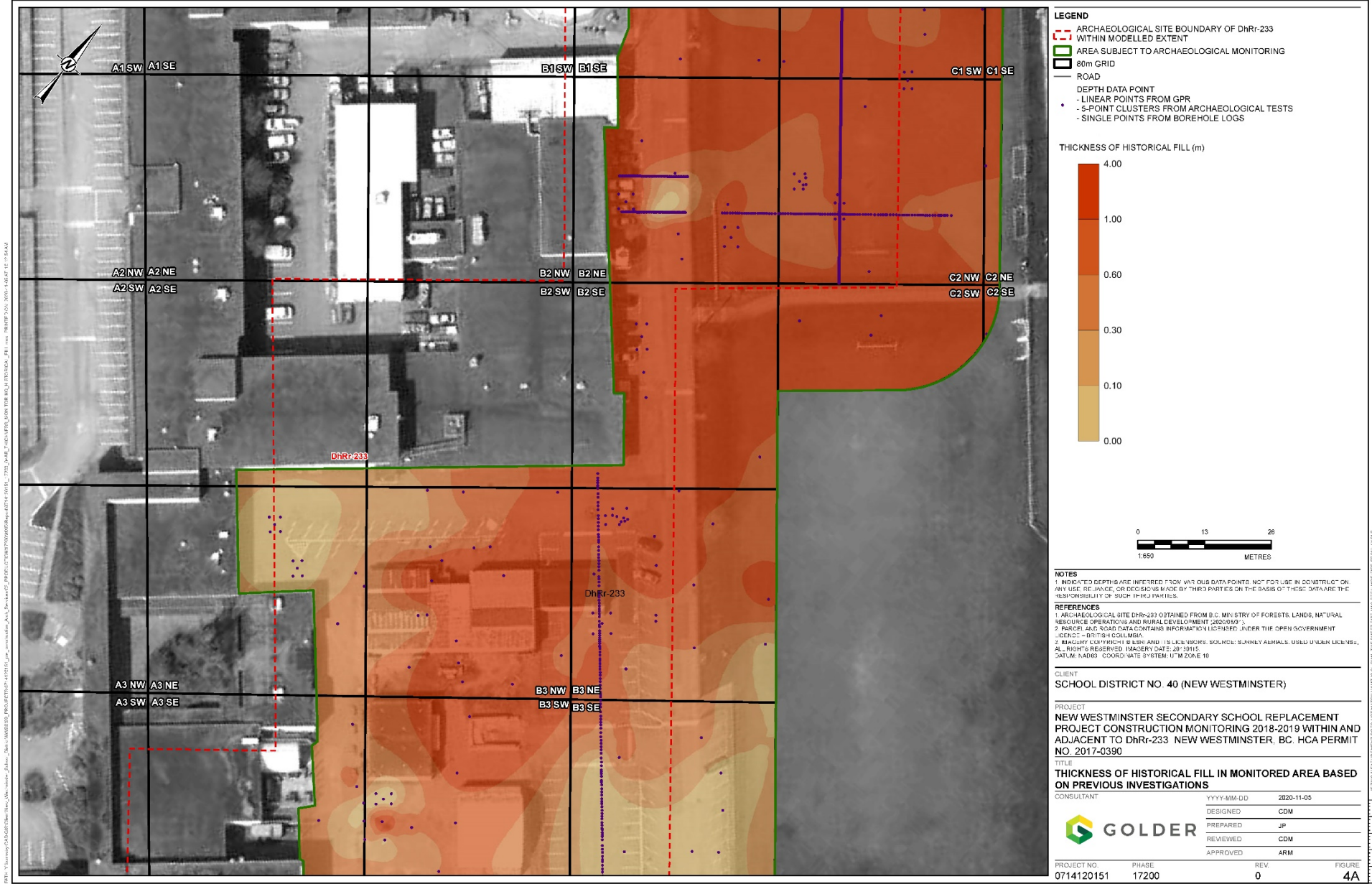




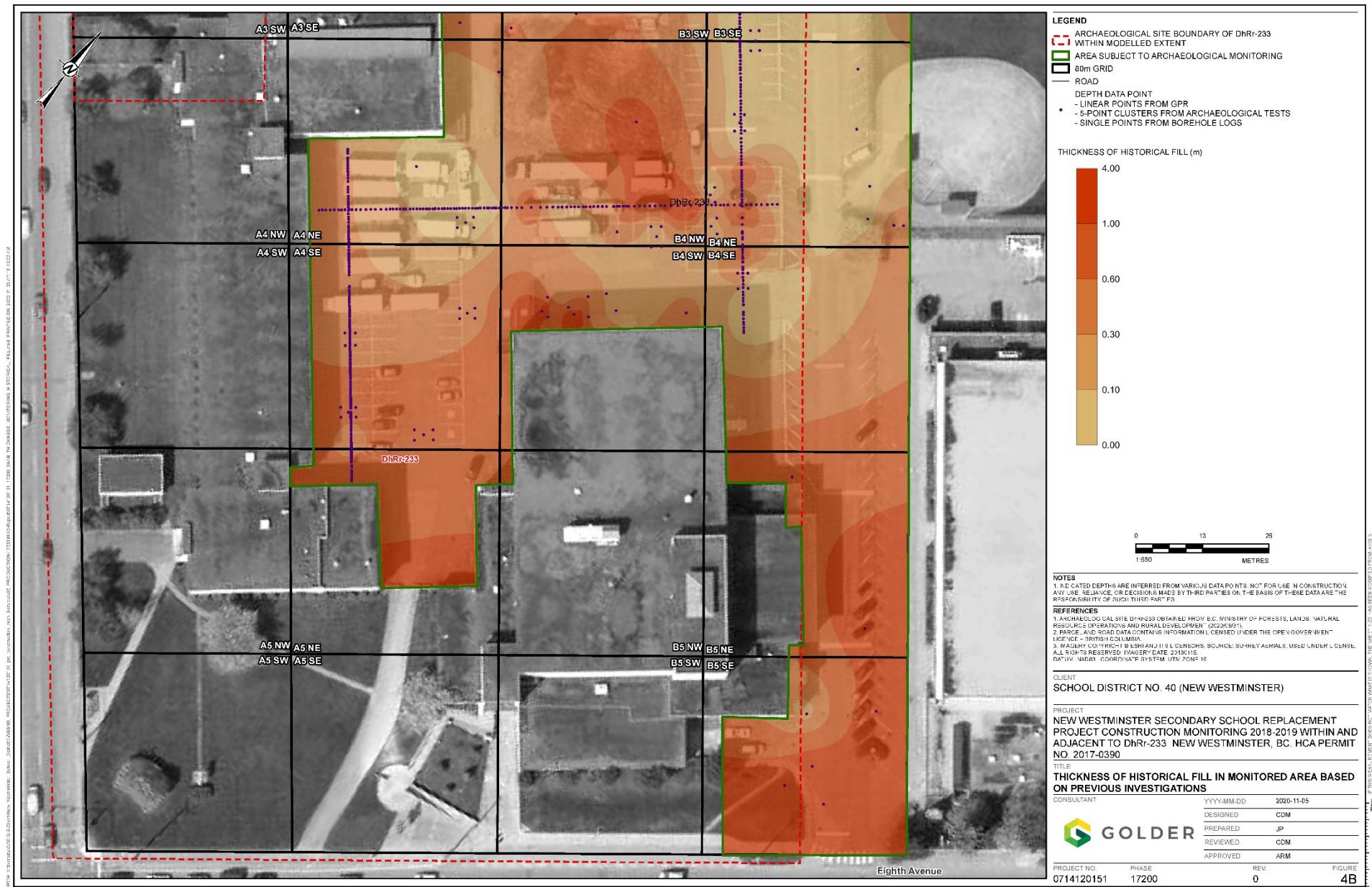




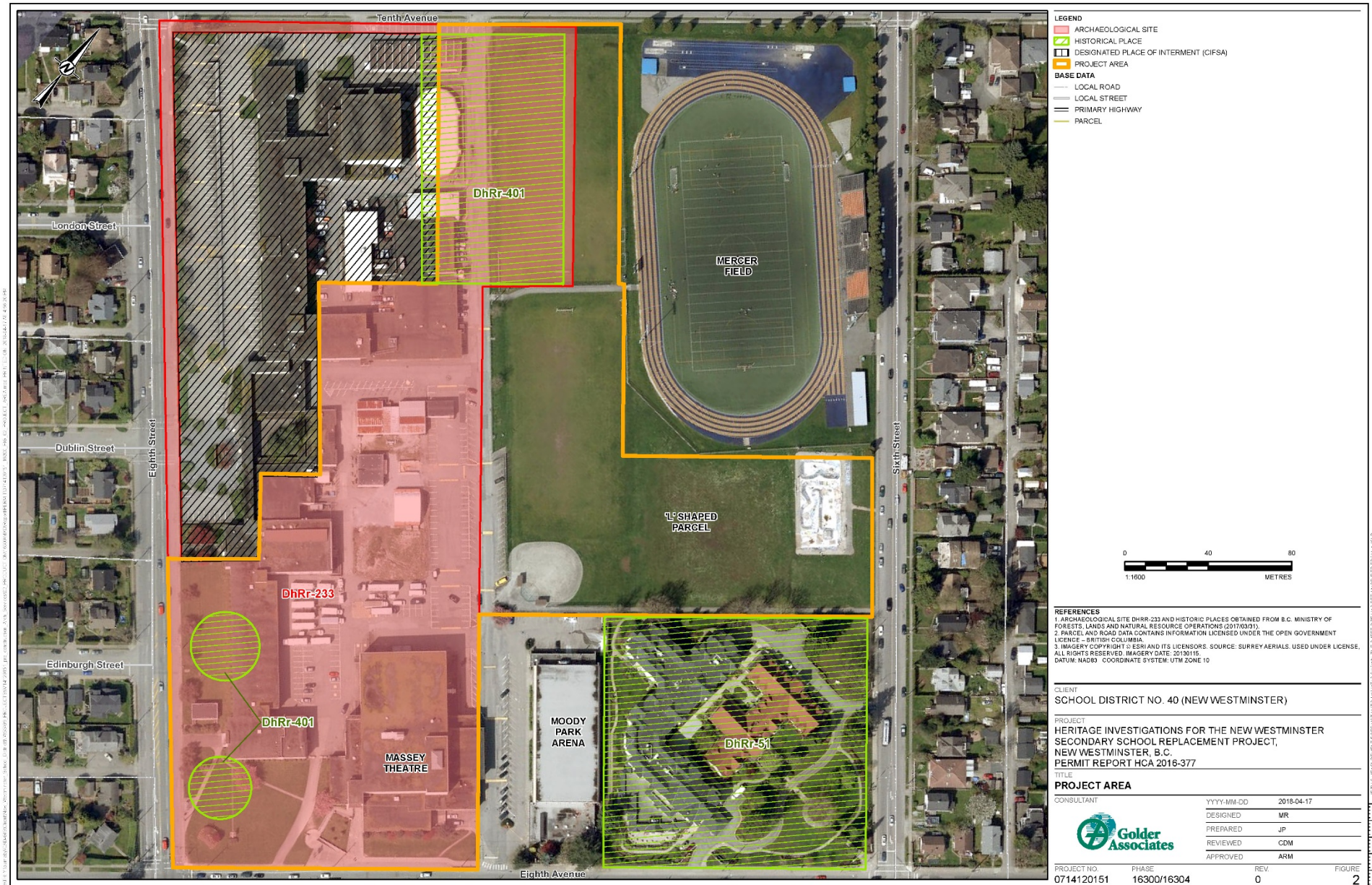




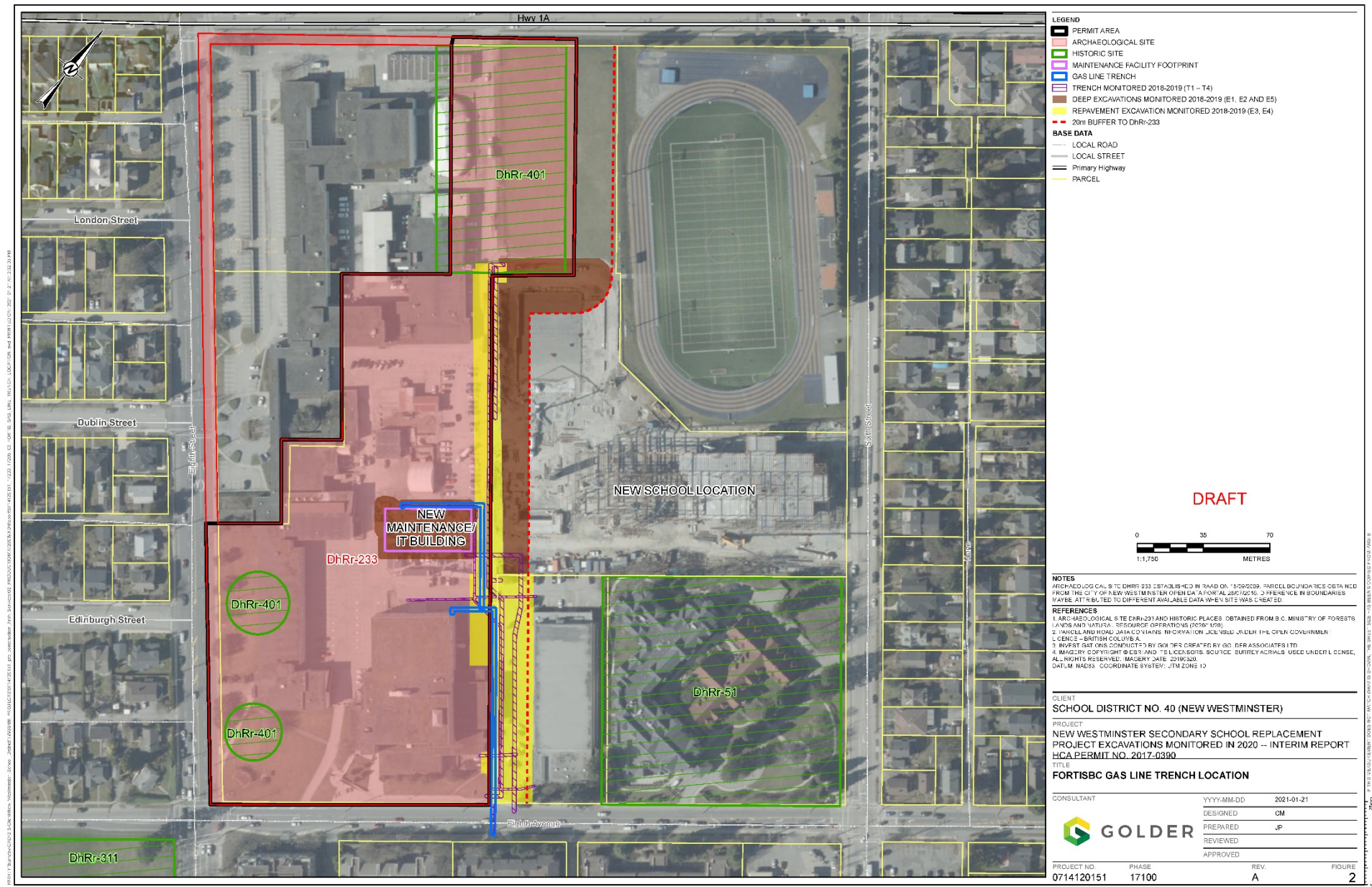




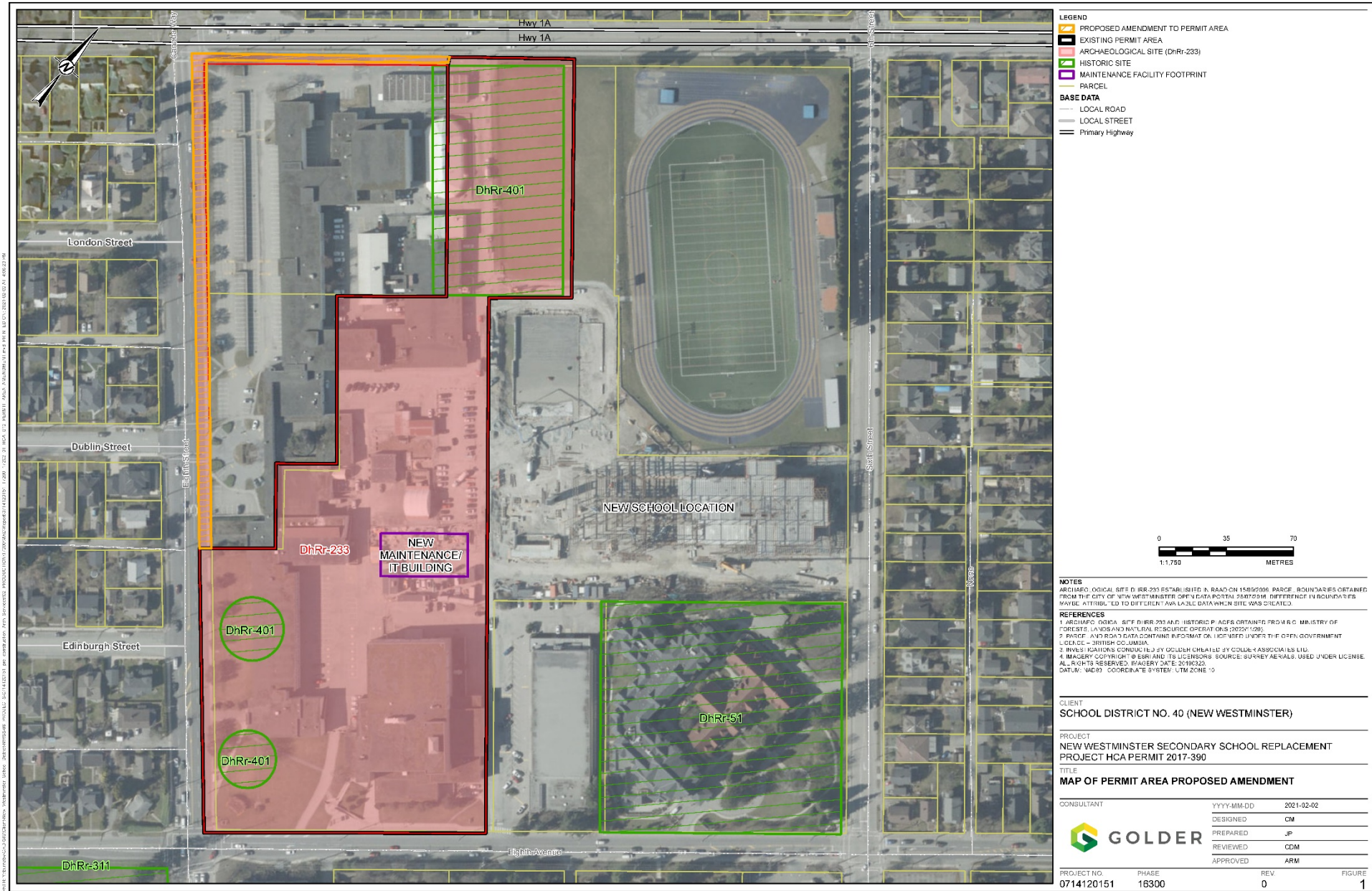


















# Questions?



**GOLDER**  
MEMBER OF WSP